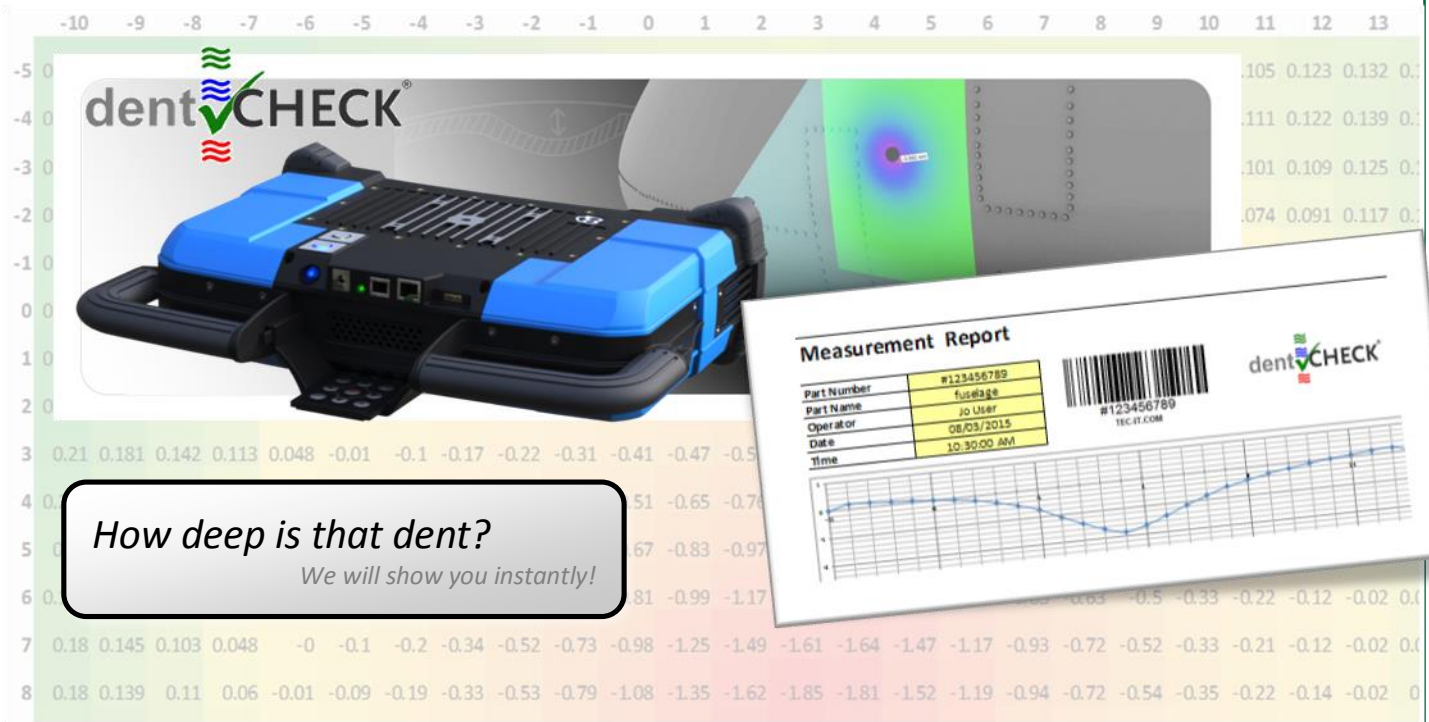


Dent-Mapping Report: 1-click SRM compliance



What Is It?

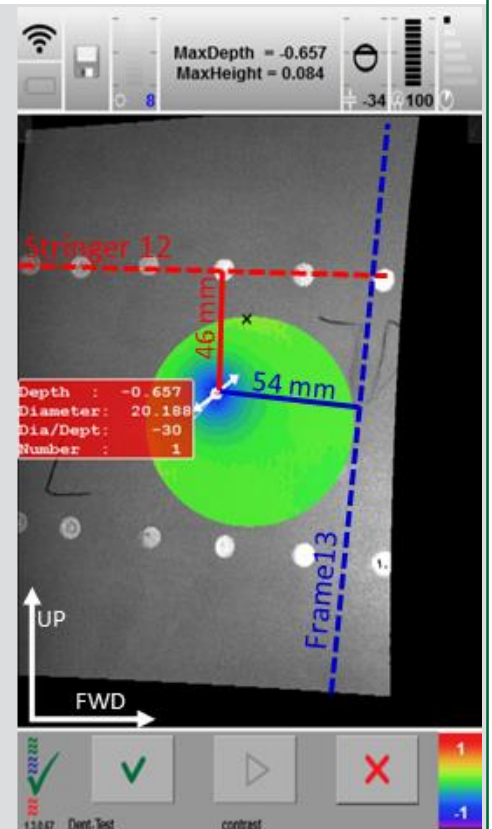
dentCHECK® is a revolutionary system that delivers accurate 3D measurement and instant analysis of dents and protrusions. 'Go/No-Go' results are projected directly on to the measurement surface in real-time, so that the technician can instantly see and act on the outcome. The annotated results images are stored within the dentCHECK® system.

With just 1-click a detailed SRM-compliant report is generated. This report can be transferred to the MRO service provider's network, using a variety of interfaces, including Wi-Fi and USB.

What's the Big Deal?

The detailed 1-click report contains all information needed to seamlessly integrate into the service provider's workflow, including –

- SRM-mandated critical measurements (A / Y)
- Color-coded results images with numerical annotation
- Sections through the deepest point of the dent
- Distance to next stringer / frame
- Detailed measurement log (time-stamp, operator ID, part ID, etc.)
- Ability to tailor the report to an airline's specific requirements



Dent-Mapping Report: 1-click SRM compliance

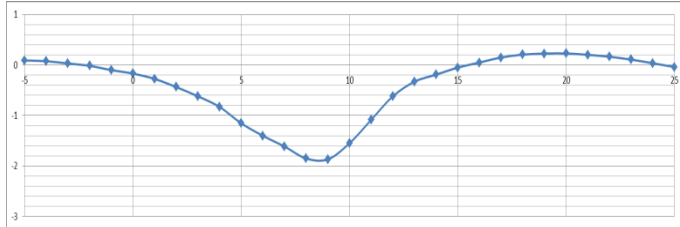
Measurement Report

Part Number	A12345678	Operator	Jo User
Part Name	fuselage	Date	08/03/2015
Measurement system	FC103	Time	10:30:00 am

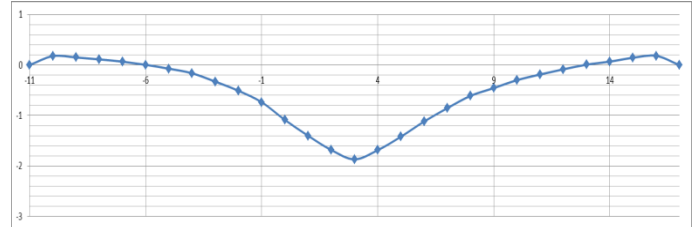
Measurement Results

Size	20.188 mm	Probe tip size	1 mm
Max depth	-1.87 mm		

Vertical Section through deepest point



Horizontal Section through deepest point



Depth map of dent

	-6	-5	-4	-3	-2	-1	0	1	2	3	4	5	6	7	8	9	10	11	12	13
2	0.083	0.013	-0.05	-0.11	-0.16	-0.22	-0.28	-0.36	-0.4	-0.44	-0.44	-0.41	-0.36	-0.33	-0.26	-0.19	-0.13	-0.07	-0.03	0.03
3	0.048	-0.01	-0.1	-0.17	-0.22	-0.31	-0.41	-0.47	-0.56	-0.62	-0.62	-0.57	-0.52	-0.47	-0.37	-0.3	-0.18	-0.11	-0.03	0.029
4	0.018	-0.04	-0.12	-0.24	-0.29	-0.44	-0.51	-0.65	-0.76	-0.83	-0.85	-0.78	-0.72	-0.64	-0.45	-0.36	-0.23	-0.15	-0.07	0
5	-0.01	-0.09	-0.17	-0.3	-0.4	-0.54	-0.67	-0.83	-0.97	-1.15	-1.1	-1.07	-0.9	-0.71	-0.6	-0.43	-0.28	-0.19	-0.1	0.002
6	-0.01	-0.08	-0.2	-0.31	-0.5	-0.64	-0.81	-0.99	-1.17	-1.4	-1.4	-1.28	-1.06	-0.83	-0.63	-0.5	-0.33	-0.22	-0.12	-0.02
7	0	-0.1	-0.2	-0.34	-0.52	-0.73	-0.98	-1.25	-1.49	-1.61	-1.64	-1.47	-1.17	-0.93	-0.72	-0.52	-0.33	-0.21	-0.12	-0.02
8	-0.01	-0.09	-0.19	-0.33	-0.53	-0.79	-1.08	-1.35	-1.62	-1.85	-1.81	-1.52	-1.19	-0.94	-0.72	-0.54	-0.35	-0.22	-0.14	-0.02
9	0.005	-0.07	-0.16	-0.33	-0.51	-0.74	-1.09	-1.4	-1.68	-1.87	-1.69	-1.42	-1.12	-0.85	-0.61	-0.46	-0.3	-0.19	-0.08	0.008
10	0.034	-0.03	-0.14	-0.27	-0.42	-0.67	-0.98	-1.22	-1.47	-1.55	-1.38	-1.19	-0.94	-0.69	-0.54	-0.37	-0.24	-0.15	-0.05	0.019
11	0.06	0.007	-0.1	-0.22	-0.35	-0.5	-0.64	-0.87	-1.07	-1.09	-0.99	-0.86	-0.7	-0.58	-0.36	-0.28	-0.17	-0.09	-0.02	0.047
12	0.094	0.048	-0.05	-0.12	-0.19	-0.29	-0.43	-0.52	-0.59	-0.62	-0.62	-0.51	-0.41	-0.37	-0.26	-0.16	-0.09	-0.04	0.044	0.087
13	0.135	0.092	0.002	-0.03	-0.08	-0.14	-0.25	-0.3	-0.34	-0.33	-0.31	-0.33	-0.23	-0.2	-0.11	-0.07	0	0.04	0.085	0.132
14	0.145	0.127	0.078	0.055	0.009	-0.03	-0.1	-0.15	-0.17	-0.19	-0.16	-0.15	-0.12	-0.04	-0.02	0.005	0.073	0.088	0.121	0.143
15	0.165	0.159	0.15	0.12	0.106	0.078	0.049	-0.02	-0.05	-0.05	-0.03	9E-04	0.014	0.043	0.056	0.102	0.113	0.138	0.165	0.17

Summary of Result

An optical assessment has been conducted on the area identified.
 Part Name: Fuselage. Part Number A12345678.
 Detailed measurement analysis conducted using a dentCHECK® system.
 The results show a deformation with a maximum depth of 1.87 mm.