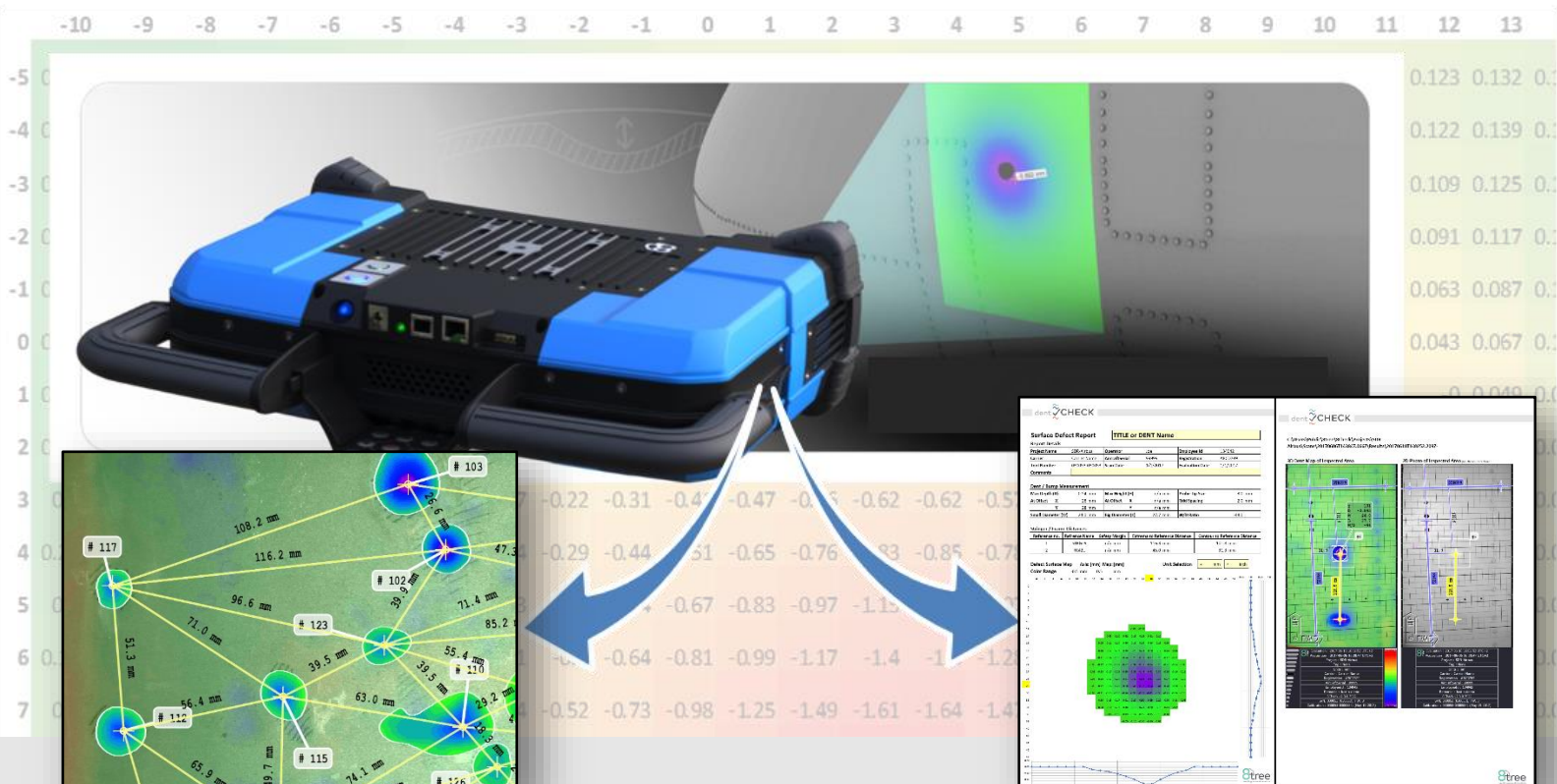


## Damage Reporting Tool (DRT) for SRM-compliant Reports



### WHAT IS IT?

The standalone *Damage Reporting Tool (DRT)*<sup>™</sup> is extremely powerful and easy to use. It allows engineering teams to **create quick and detailed SRM-compliant damage reports** using inspection results from the dentCHECK inspection tool – *all in less than 5 minutes!* Easily annotate critical distances, coordinate symbols, cross-sections etc. This digital report can be submitted to OEMs as an auditable record.

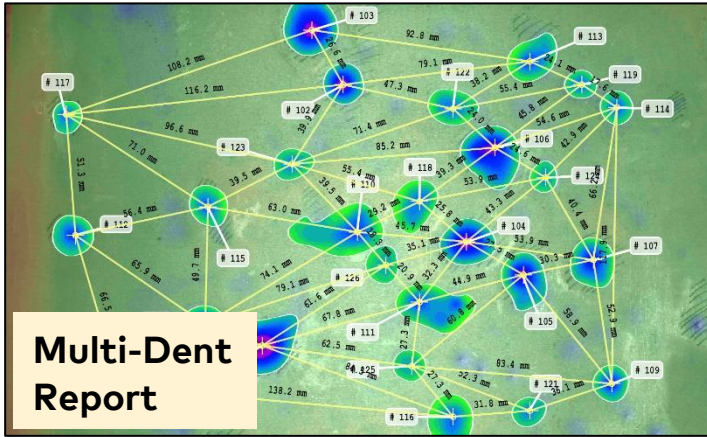
### HOW DOES IT HELP ME?

The detailed SRM-compliant damage report contains all information needed to seamlessly integrate into the service provider's workflow, including

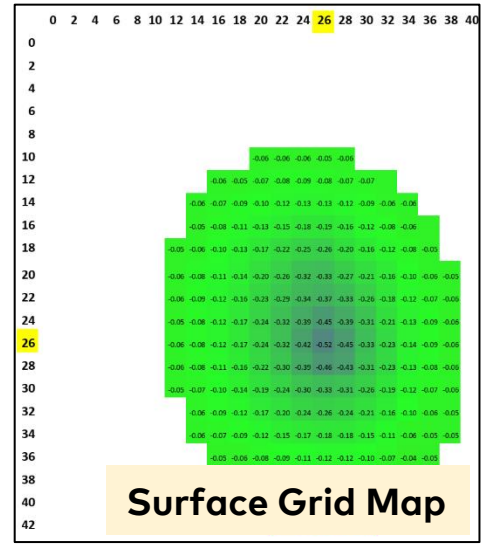
- SRM mandated critical measurements (**depth, dimensions, A/Y**)
- Color coded result images with numerical annotation
- Vertical / horizontal **cross-section of each defect**
- **Distance to next stringer / frame**
- Detailed measurement log (time stamp, operator ID, part ID etc.)
- Custom fields to conform to an airline's specific requirements
- Switch units between mm and inches
- **Multi-Dent Reports:** 1-Click inter-dent distance, closest neighbors
- **Blendout Reports,** using manual or integrated UTgauge measurements



# A Digital Record of all Project Information with Accurate & Automatic Measurements!



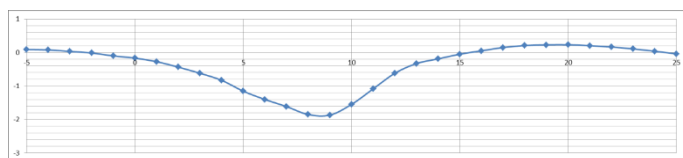
**Multi-Dent Report**



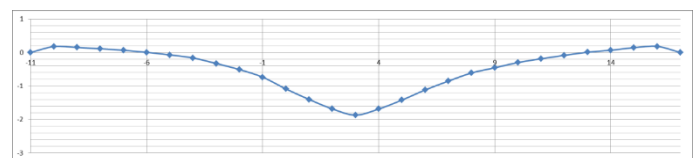
**Surface Grid Map**

Surface Defect Report		TITLE or DENT Name			
<b>Report Details</b>					
Project Name	Demo Panel	Operator	John Doe	Employee Id	12345
Carrier	Carrier Name	AircraftSerial	99999	Registration	ABCD789
Tool Number	30067	Scan Date	01/01/2019	Evaluation Date	17/01/2019
Comments					
<b>Dent / Bump Measurement</b>					
Maximum Depth	-0.93 mm	Maximum Height	0.04 mm	Probe Tip Size	3.0 mm
Small Diameter	34.4 mm	Big Diameter	64.3 mm	Diameter/Depth Ratio	-37.0
On Map X-axis	25.0 mm	On Map X-axis	27.0 mm	Grid Spacing	3.5 mm
Y-axis	15.0 mm	Y-axis	17.0 mm		
<b>Stringer / Frame Distances</b>					
Reference no.	Reference Name	Safety Margin	Dist: Extrema - Reference	Dist: Contour - Reference	
1	FRAME35	0.0 mm	32.5 mm	16.6 mm	
2	STRINGER30	15.0 mm	70.3 mm	47.6 mm	

Vertical Section through deepest Point



Horizontal Section through deepest Point



TELL ME MORE!

> [info@8-tree.com](mailto:info@8-tree.com) / [www.8-tree.com](http://www.8-tree.com)



revealing more dimensions