

Fastener Inspection with real-time visual Feedback

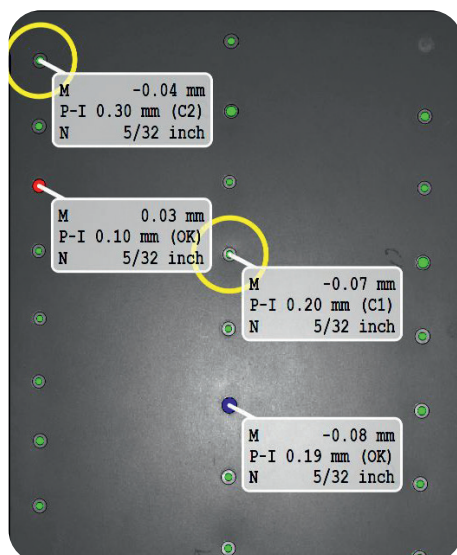


WHAT IS IT?

fastCHECK is a revolutionary 3D surface inspection system that is amazingly easy to use – fast, simple and intuitive. It represents a ground-breaking approach to measuring fastener flushness – quickly, consistently and objectively.

HOW DOES IT WORK?

fastCHECK delivers high-accuracy 3D measurement and analysis of fastener flushness and angle, at the push of a button. Real-time visualization of results is achieved by augmented reality (AR), which presents the measurement results directly on to the measurement surface.



THE MEASUREMENT SURFACE
BECOMES THE SCREEN™

WHAT ABOUT REPORTS?

Specifically tailored to the requirements of fastener and rivet inspection, fastCHECK delivers easy-to-understand analysis of fastener flushness. Designed to be a fully self-contained unit, fastCHECK is completely tetherless – no external computer, no external monitor and no cumbersome power-supply cables. fastCHECK is the first in a family of truly handheld portable, yet powerful, measurement analysis tools from 8tree.

HIGH-PRECISION 3D FASTENER
INSPECTION WAS NEVER SO EASY!

OPTICALLY MEASURES AND MARKS UP TO 30 FASTENERS IN 4 SECONDS

Performance overview

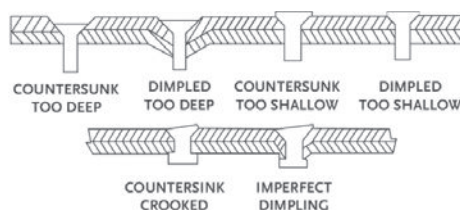
Field of View (FoV)	18 x 32 cm / 7 x 12.5"	
Accuracy	Flushness Diameter	$\pm 12 \mu\text{m} / 0.0005''$ $\pm 1 \text{ mm} / 0.04''$
Acquisition Time	0.1 sec	
Inspection Capability	30 fasteners at once	
Measurement Speed	4 seconds	
Battery Life	4.5 hours	
Nominal Working Distance	$50 \pm 5 \text{ cm} / 20 \pm 2''$	
Weight	4 kg / 8.8 lbs	
Dimensions	35 x 30 x 9 cm / 14 x 12 x 4"	

fastCHECK SETS A NEW INDUSTRY BENCHMARK FOR:

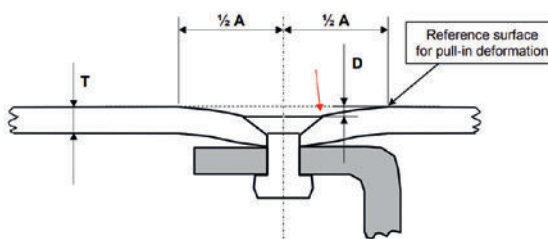
- ✓ **Speed:** 10x faster than current industry standard
- ✓ **Portability:** Lightweight, compact, battery-powered, integrated CPU. Easy to handle on the production floor.
- ✓ **Ease of Use:** Real-time visual feedback and intuitive user interface
- ✓ **Flexibility:**
 - Easily customized to different tolerance needs
 - Measurement results recorded in different formats
 - Scalable architecture enables new product configurations

MEASUREMENTS INCLUDE:

- ✓ Fastener flushness at highest, lowest and mid point
- ✓ Angularity of fastener head



- ✓ Rivet Pull-In



8TR-BRO-011-015 Technical data are subject to change without notice.

8TREE

Dallas, TX
Kuala Lumpur, MY
Constance, GER

+1 408 813 0969
info@8-tree.com
www.8-tree.com

FOLLOW US ON



@8tree

www.youtube.com/user/8treefastCHECK



@8tree

www.linkedin.com/company/8tree/



@8tree2

www.twitter.com/8tree2