

Damage Reporting Tool (DRT) for SRM-compliant Reports

WHAT IS IT?

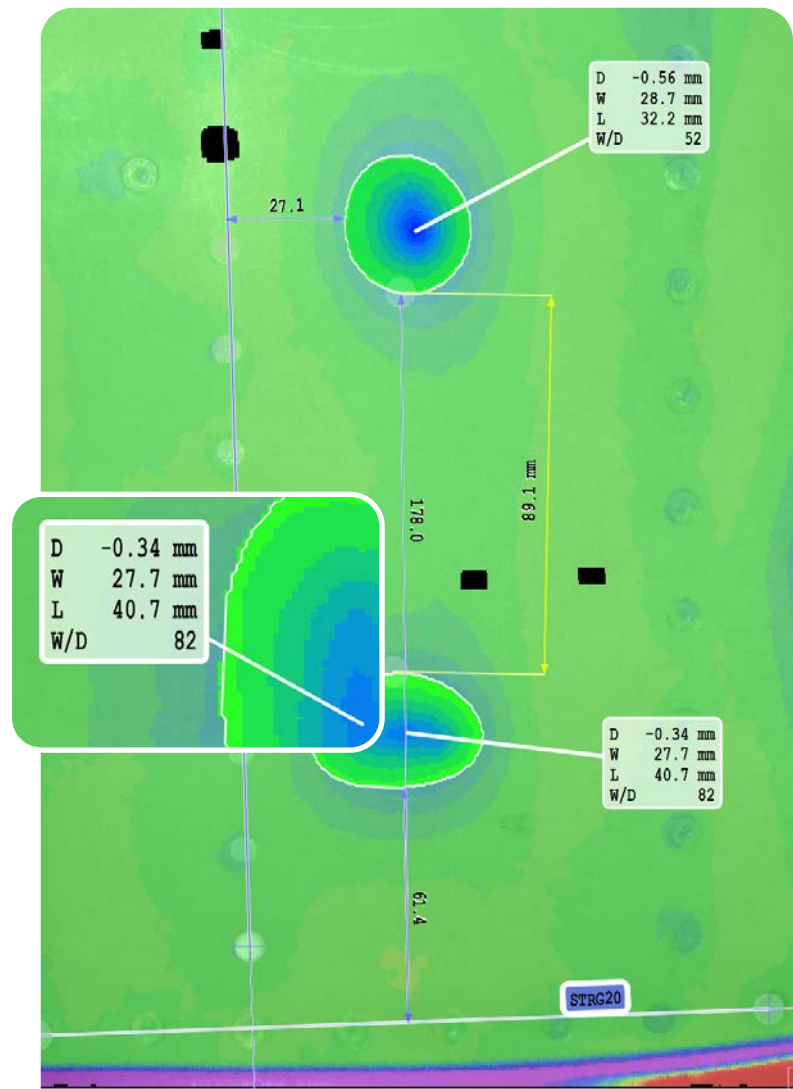
The standalone Damage Reporting Tool (DRT)[™] is extremely powerful and easy to use. It allows engineering teams **to create quick and detailed SRM-compliant damage reports** using inspection results from the dentCHECK inspection tool – all in **less than 5 minutes!** Easily annotate critical distances, coordinate symbols, cross-sections etc. This digital report can be submitted to OEMs as an auditable record.



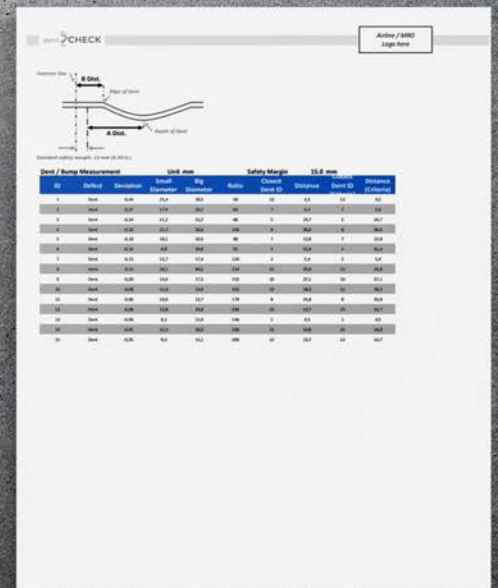
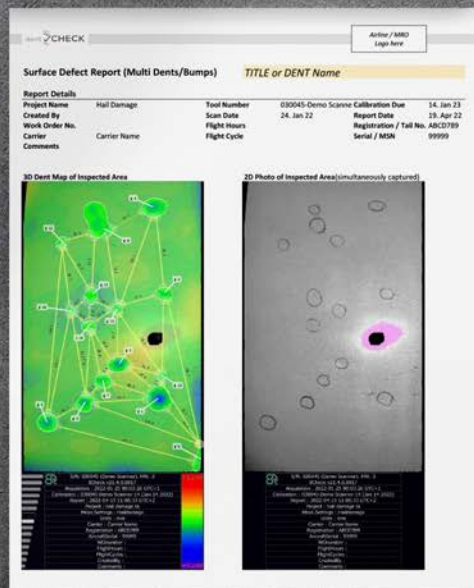
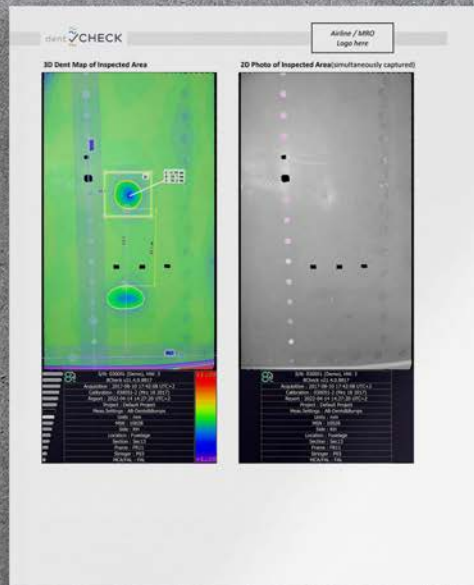
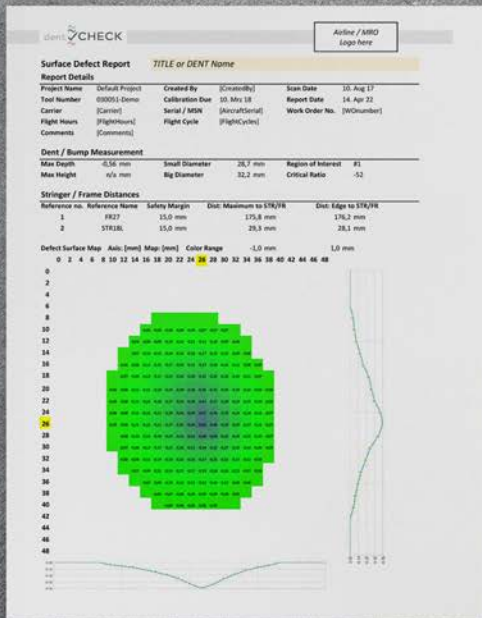
HOW DOES IT HELP ME?

The detailed SRM-compliant damage report contains all information needed to seamlessly integrate into the maintenance workflow, including

- ✓ SRM mandated critical measurements (depth, dimensions, A/Y)
- ✓ Color coded result images with numerical annotation
- ✓ Vertical / horizontal cross-section of each defect
- ✓ Distance to next stringer / frame
- ✓ Detailed measurement log (time stamp, operator ID, part ID etc.)
- ✓ Custom fields to conform to an airline's specific requirements
- ✓ Switch units between mm and inches
- ✓ Multi-Dent Reports: 1-Click inter-dent distance, closest neighbors
- ✓ Blendout Reports, using manual or integrated UTgauge measurements



A Digital Record of all Project Information with Accurate & Automatic Measurements



8TR-BRO-004-100 Technical data are subject to change without notice.

8TREE

Dallas, TX
Kuala Lumpur, MY
Constance, GER

+1 408 813 0969
info@8-tree.com
www.8-tree.com

FOLLOW US ON

@8tree
 @8tree
 @8tree2

www.youtube.com/user/8treefastCHECK
www.linkedin.com/company/8tree/
www.twitter.com/8tree2