

# 1-Click 3D fastener inspection with real-time visual feedback

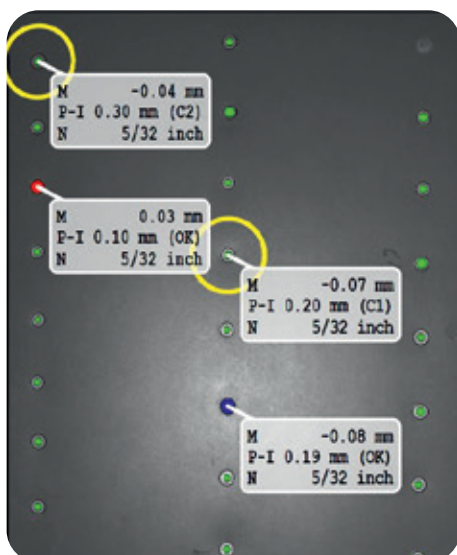


## WHAT IS IT?

fastCHECK is a revolutionary 3D surface inspection system that is amazingly easy to use – fast, simple and intuitive. It represents a ground-breaking approach to measuring fastener flushness – quickly, consistently and objectively.

## HOW DOES IT WORK?

fastCHECK delivers high-accuracy 3D measurement and analysis of fastener flushness and angle, at the push of a button. Real-time visualization of results is achieved by augmented reality (AR), which presents the measurement results directly on to the measurement surface.



THE MEASUREMENT SURFACE  
BECOMES THE SCREEN™

## WHAT ABOUT REPORTS?

Specifically tailored to the requirements of fastener and rivet inspection, fastCHECK delivers easy-to-understand analysis of fastener flushness. Designed to be a fully self-contained unit, fastCHECK is completely tetherless – no external computer, no external monitor and no cumbersome power-supply cables. fastCHECK is the first in a family of truly handheld portable, yet powerful, measurement analysis tools from 8tree.

HIGH-PRECISION 3D FASTENER  
INSPECTION WAS NEVER SO EASY!

# OPTICALLY MEASURES AND MARKS UP TO 100 FASTENERS IN 4 SECONDS

## Performance overview

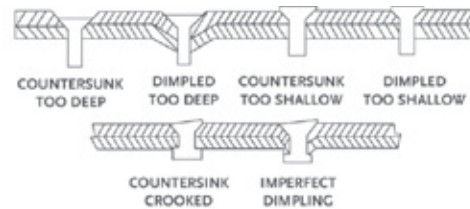
Field of View (FoV)	18 x 32 cm / 7 x 12.5"	
Accuracy	Flushness Diameter	$\pm 12 \mu\text{m} / 0.0005''$ $\pm 1 \text{mm} / 0.04''$ } at 95% ( $2\sigma$ ) confidence interval
Acquisition Time	0.1 sec	
Inspection Capability	~ 100 fasteners at once	
Measurement Speed	4 seconds	
Battery Life	4.5 hours	
Nominal Working Distance	350 $\pm$ 50 cm / 13.8 $\pm$ 2"	
Weight	3.4 kg / 7.5 lbs (with integrated CPU and battery)	
Dimensions	340 x 200 x 340 cm / 13.4" x 7.8" x 13.4"	

## fastCHECK SETS A NEW INDUSTRY BENCHMARK FOR:

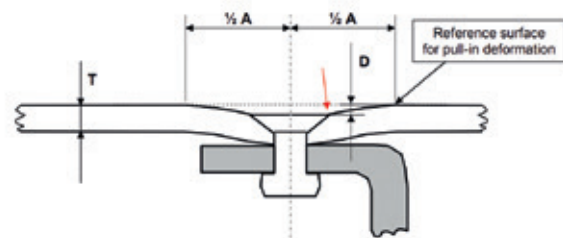
- ✓ **Speed:** 10x faster than current industry standard
- ✓ **Portability:** Lightweight, compact, battery-powered, integrated CPU. Easy to handle on the production floor.
- ✓ **Ease of Use:** Real-time visual feedback and intuitive user interface
- ✓ **Flexibility:**
  - Easily customized to different tolerance needs
  - Measurement results recorded in different formats
  - Scalable architecture enables new product configurations

## MEASUREMENTS INCLUDE:

- ✓ Fastener flushness at highest, lowest and mid point
- ✓ Angularity of fastener head



- ✓ Rivet Pull-In



### 8TREE

Dallas, TX, USA +1 408 813 0969  
 Constance, GER +49 7531 891 4990  
 Kuala Lumpur, MY info@8-tree.com  
 www.8-tree.com

### dentCHECK AS A SERVICE

+1 302 467 3734  
 dentmappingservice@8-tree.com

